



GMT MONTHLY MEMBERSHIP PROGRESS REPORT

Results as of: 6/30/2020

GMT Constitutional Area 6, Group D

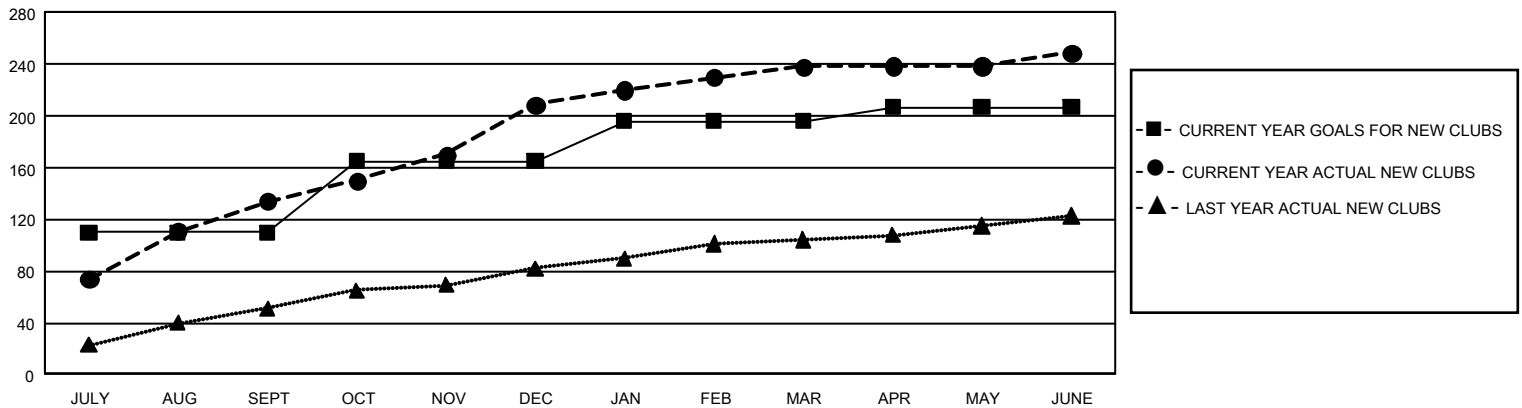
GMT: OPEN

REPORT DOES NOT INCLUDE CLUBS IN UNDISTRICTED AREAS.

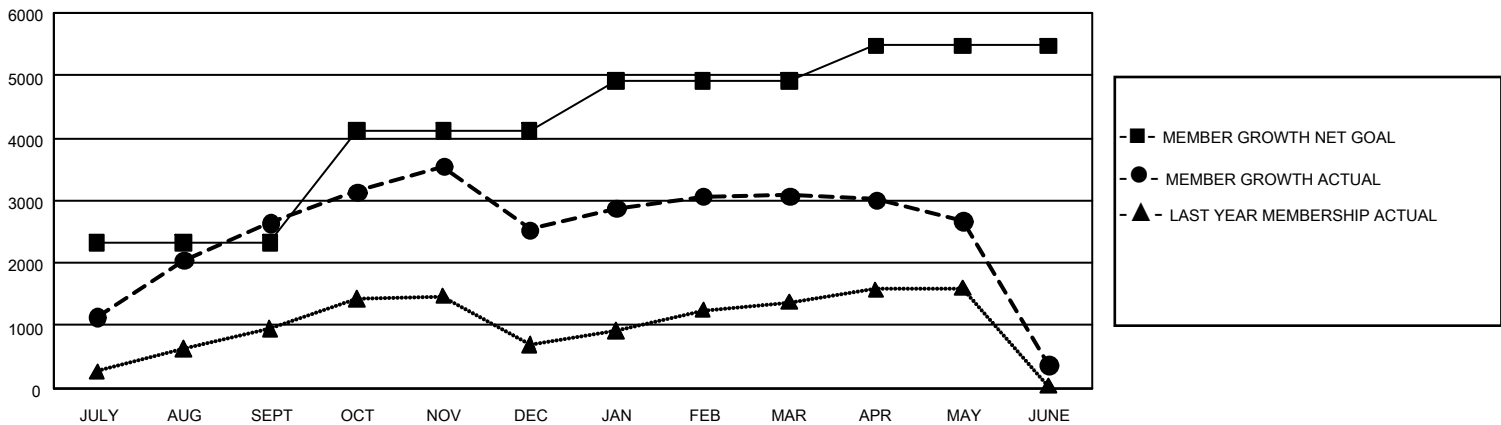
Clubs			
RESULTS FOR 2019-2020			
QUARTER	NEW CLUB GOAL	NEW CLUBS	DROPPED CLUBS
JULY/AUG/SEPT	330	134	3
OCT/NOV/DEC	165	75	38
JAN/FEB/MAR	93	29	8
APR/MAY/JUNE	33	11	0

Members			
RESULTS FOR 2019-2020			
QUARTER	MEMBER GROWTH NET GOAL	MEMBER GROWTH ACTUAL	DROPPED MEMBERS ACTUAL (including transfers)
JULY/AUG/SEPT	6,975	3,814	1,114
OCT/NOV/DEC	5,355	2,324	2,410
JAN/FEB/MAR	2,415	1,366	739
APR/MAY/JUNE	1,680	672	3,320

GOALS AND ACTUAL NEW CLUBS CUMULATIVE



GOALS AND ACTUAL MEMBERS CUMULATIVE



DROPPED CLUBS: 49

795 CLUBS OF 1,375 ADDED 1 OR MORE NEW MEMBERS

GENDER DISTRIBUTION

MALE 23,053 (74.10%)
FEMALE 8,059 (25.90%)

DROPPED MEMBERS

DECEASED	34
CLUB CANCELLED	850
OTHER	6,694
TOTAL	7,578

[CLICK HERE FOR CUMULATIVE MEMBERSHIP DATA](#)

TOTAL FAMILY UNIT MEMBERS 19,613

FAMILY MEMBERS PAYING HALF DUES 12,370